



**Water Monitoring Result at M5B - Central Cooling Water Intake Group
Mid-Flood Tide**

Date	Time	Weather Condition	Sampling Depth		Water Temperature			pH			Salinity			DO Saturation			DO			Turbidity			Suspended Solids	
					°C		-		ppt		%		mg/L		NTU		mg/L							
					Value	Average	Value	Average	Value	Average	Value	Average	Value	Average	Value	Average	Value	Average	Value	Average				
2/11/15	10:30	Fine	Middle	3.5	25.70	25.70	25.65	8.25	8.25	8.30	31.80	31.80	31.80	86.9	87.4	87.1	5.92	5.96	5.94	8.56	8.56	8.56	7	6.00
	10:32		Middle	3.5	25.60	25.60		8.34	8.34		31.80	31.80		86.5	87.5		5.90	5.97		8.56	8.54		5	
4/11/15	14:10	Fine	Middle	3.5	26.50	26.50	26.50	8.38	8.38	8.39	32.52	32.52	32.55	77.0	77.6	77.7	5.09	5.20	5.21	12.54	12.54	12.45	9	9.50
	14:12		Middle	3.5	26.50	26.50		8.40	8.40		32.57	32.57		79.2	76.9		5.29	5.25		12.38	12.34		10	
6/11/15	14:49	Fine	Middle	3.5	25.90	25.90	25.95	8.35	8.35	8.36	32.47	32.47	32.48	81.9	80.3	79.6	5.53	5.42	5.37	8.36	7.85	8.22	4	4.50
	14:51		Middle	3.5	26.00	26.00		8.36	8.36		32.48	32.48		78.7	77.3		5.32	5.22		8.38	8.30		5	
9/11/15	15:35	Fine	Middle	3.5	27.10	27.10	27.15	8.30	8.30	8.31	32.40	32.40	32.40	80.6	79.5	79.7	5.34	5.27	5.28	9.06	9.06	9.08	8	8.50
	15:37		Middle	3.5	27.20	27.20		8.32	8.32		32.39	32.39		78.6	80.1		5.20	5.30		9.06	9.12		9	
11/11/15	15:50	Fine	Middle	3.5	25.60	25.60	25.60	8.39	8.39	8.39	32.72	32.72	32.73	89.9	88.9	89.8	6.10	6.04	6.10	7.78	7.72	7.70	5	4.50
	15:52		Middle	3.5	25.60	25.60		8.39	8.39		32.73	32.73		90.2	90.2		6.12	6.12		7.66	7.63		4	
13/11/15	20:35	Cloudy	Middle	3.5	24.40	24.40	24.40	8.42	8.42	8.43	32.98	32.98	32.98	77.2	78.3	78.0	5.34	5.42	5.40	13.27	12.67	12.68	11	11.50
	20:36		Middle	3.5	24.40	24.40		8.43	8.43		32.98	32.98		78.5	78.0		5.43	5.40		12.53	12.26		12	
17/11/15	10:25	Fine	Middle	3.5	26.40	26.40	26.40	8.31	8.31	8.32	32.13	32.13	32.13	89.4	88.9	89.1	6.01	5.97	5.99	7.49	7.57	7.56	5	5.00
	10:27		Middle	3.5	26.40	26.40		8.32	8.32		32.13	32.13		88.8	89.4		5.97	6.01		7.59	7.58		5	
19/11/15	11:05	Fine	Middle	3.5	26.50	26.50	26.40	8.27	8.27	8.28	31.39	31.39	31.45	77.4	76.2	75.7	5.23	5.15	5.11	14.36	14.05	14.07	18	17.00
	11:07		Middle	3.5	26.30	26.30		8.29	8.29		31.51	31.51		75.1	74.0		5.07	5.00		13.95	13.92		16	
21/11/15	14:38	Fine	Middle	3.5	25.60	25.60	25.60	8.28	8.28	8.29	32.27	32.27	32.29	80.1	78.2	77.5	5.45	5.32	5.27	6.76	6.70	6.74	4	4.00
	14:40		Middle	3.5	25.60	25.60		8.30	8.30		32.31	32.31		76.7	74.9		5.22	5.10		6.70	6.80		4	
23/11/15	15:05	Fine	Middle	3.5	26.10	26.10	26.15	8.33	8.33	8.34	32.32	32.32	32.31	93.8	93.2	93.3	6.32	6.28	6.28	10.83	10.83	10.82	9	9.00
	15:07		Middle	3.5	26.20	26.20		8.34	8.34		32.30	32.30		92.2	93.8		6.21	6.32		10.83	10.80		9	
25/11/15	15:21	Fine	Middle	3.5	25.50	25.50	25.45	8.35	8.35	8.36	31.99	31.99	32.00	83.3	83.1	82.6	5.70	5.69	5.65	6.11	5.86	5.95	5	5.50
	15:23		Middle	3.5	25.40	25.40		8.36	8.36		32.00	32.00		82.5	81.5		5.64	5.57		5.82	6.00		6	
27/11/15	19:20	Fine	Middle	3.5	22.60	22.60	22.40	8.37	8.37	8.38	32.71	32.71	32.72	80.5	80.2	80.2	5.91	5.79	5.82	6.30	6.28	6.27	5	5.00
	19:21		Middle	3.5	22.20	22.20		8.39	8.39		32.72	32.72		79.7	80.2		5.76	5.80		6.26	6.23		5	
30/11/15	10:35	Fine	Middle	3.5	23.90	23.90	23.90	8.35	8.35	8.36	32.20	32.20	32.20	85.9	86.4	86.1	6.02	6.06	6.04	11.02	11.01	11.01	10	9.50
	10:37		Middle	3.5	23.90	23.90		8.37	8.37		32.20	32.20		86.4	85.8		6.06	6.02		11.01	11.01		9	

Remarks:
Single underline denotes exceedance over Action Level.
Double underline denotes exceedance over Limit Level.



**Water Monitoring Result at Culvert J - Reference Station
Mid-Flood Tide**

Date	Time	Weather Condition	Sampling Depth		Water Temperature			pH			Salinity			DO Saturation			DO			Turbidity			Suspended Solids	
					°C		-		ppt		%		mg/L		NTU		mg/L							
			m	Value	Average	Value	Average	Value	Average	Value	Average	Value	Average	Value	Average	Value	Average	Value	Average	Value	Average	Value	Average	
2/11/15	10:25	Fine	Middle	3.0	25.60	25.60	25.55	8.36	8.36	8.32	25.06	25.06	25.05	64.0	64.9	64.1	4.54	4.61	4.55	17.41	17.29	17.29	9	10.00
	10:27		Middle	3.0	25.50	25.50		8.27	8.27		25.00	25.06		64.7	62.7		64.7	4.60		4.46	17.27		17.18	
4/11/15	14:06	Fine	Middle	3.5	26.80	26.80	26.75	8.36	8.36	8.37	32.39	32.39	32.40	71.6	32.8	62.9	4.79	4.87	4.88	9.77	9.78	9.74	6	6.00
	14:08		Middle	3.5	26.70	26.70		8.38	8.38		32.40	32.40		73.7	73.5		62.9	4.93		4.92	9.78		9.61	
6/11/15	14:45	Fine	Middle	3.5	25.80	25.80	25.80	8.34	8.34	8.35	31.67	31.67	31.69	67.7	64.8	64.7	4.61	4.41	4.40	10.55	10.51	10.48	5	5.50
	14:47		Middle	3.5	25.80	25.80		8.35	8.35		31.71	31.71		63.6	62.6		64.7	4.33		4.26	10.44		10.40	
9/11/15	15:31	Fine	Middle	3.5	27.40	27.40	27.45	8.29	8.29	8.29	32.18	32.18	31.66	58.3	58.2	58.2	3.88	3.86	3.86	9.17	9.14	9.14	6	6.00
	15:33		Middle	3.5	27.50	27.50		8.29	8.29		31.13	31.13		58.3	57.8		58.2	3.87		3.84	9.12		9.12	
11/11/15	15:45	Fine	Middle	3.0	25.70	25.70	25.70	8.39	8.39	8.39	32.55	32.55	32.56	83.5	84.5	84.0	5.67	5.75	5.71	8.61	8.66	8.69	6	5.00
	15:47		Middle	3.0	25.70	25.70		8.39	8.39		32.56	32.56		84.0	84.0		84.0	5.70		5.70	8.68		8.80	
13/11/15	20:48	Cloudy	Middle	3.0	24.80	24.80	24.85	8.41	8.41	8.41	31.05	31.05	31.06	63.9	64.8	64.3	4.44	4.51	4.47	9.99	9.64	9.58	8	7.50
	20:49		Middle	3.0	24.90	24.90		8.40	8.40		31.06	31.06		64.4	64.0		64.3	4.48		4.45	9.38		9.32	
17/11/15	10:20	Fine	Middle	3.0	26.60	26.60	26.65	8.29	8.29	8.30	32.07	32.07	32.07	83.1	83.2	83.0	5.57	5.58	5.56	7.91	7.78	7.83	6	5.50
	10:22		Middle	3.0	26.70	26.70		8.30	8.30		32.07	32.07		82.3	83.4		83.0	5.51		5.59	7.80		7.83	
19/11/15	11:01	Fine	Middle	3.5	26.50	26.50	26.55	8.28	8.28	8.28	30.02	30.02	30.02	66.5	66.5	66.3	4.51	4.51	4.50	11.77	11.82	11.80	11	11.50
	11:03		Middle	3.5	26.60	26.60		8.28	8.28		30.02	30.02		66.1	66.0		66.3	4.49		4.48	11.89		11.71	
21/11/15	14:34	Fine	Middle	3.5	25.70	25.70	25.75	8.29	8.29	8.29	30.49	30.49	30.47	69.9	70.7	70.0	4.80	4.86	4.81	9.32	9.32	9.37	8	7.00
	14:36		Middle	3.5	25.80	25.80		8.29	8.29		30.44	30.44		69.6	69.7		70.0	4.78		4.79	9.35		9.47	
23/11/15	15:00	Fine	Middle	3.0	26.60	26.60	26.75	8.30	8.30	8.31	31.84	31.84	31.83	88.4	88.8	87.8	5.92	5.94	5.87	8.83	8.76	8.80	6	6.50
	15:02		Middle	3.0	26.90	26.90		8.32	8.32		31.82	31.82		87.5	86.3		87.8	5.85		5.77	8.80		8.81	
25/11/15	15:17	Fine	Middle	3.5	25.60	25.60	25.65	8.32	8.32	8.33	31.58	31.58	31.55	75.8	74.3	73.0	5.18	5.08	4.99	6.43	6.42	6.45	5	6.00
	15:19		Middle	3.5	25.70	25.70		8.34	8.34		31.51	31.51		71.2	70.5		73.0	4.86		4.82	6.43		6.53	
27/11/15	19:28	Fine	Middle	3.0	22.60	22.60	22.45	8.44	8.44	8.44	32.07	32.09	32.09	75.5	76.0	75.7	5.46	4.49	5.22	7.72	7.69	7.77	7	6.50
	19:29		Middle	3.0	22.30	22.30		8.44	8.44		32.09	32.09		75.6	75.5		75.7	5.47		5.46	7.86		7.82	
30/11/15	10:30	Fine	Middle	3.0	23.90	23.90	23.90	8.33	8.33	8.34	31.07	31.07	31.08	78.7	79.3	78.6	5.56	5.60	5.55	11.16	11.21	11.23	9	8.00
	10:32		Middle	3.0	23.90	23.90		8.34	8.34		31.08	31.08		78.2	78.0		78.6	5.52		5.51	11.27		11.29	



**Water Monitoring Result at M5B - Central Colling Water Intake Group
Mid-Ebb Tide**

Date	Time	Weather Condition	Sampling Depth		Water Temperature			pH			Salinity			DO Saturation		DO		Turbidity		Suspended Solids				
					°C		-		ppt		%		mg/L		NTU		mg/L							
					Value	Average	Value	Average	Value	Average	Value	Average	Value	Average	Value	Average	Value	Average	Value	Average				
2/11/15	6:48	Cloudy	Middle	3.0	23.20	23.20	23.15	8.38	8.38	8.38	31.34	31.34	31.35	77.5	78.2	77.7	5.54	5.59	5.56	10.34	10.73	10.46	4	4.00
	6:49		Middle	3.0	23.10	23.10		8.38	8.38		31.35	31.35		77.9	77.3		5.57	5.53		10.52	10.26		4	
4/11/15	7:00	Cloudy	Middle	3.0	25.00	25.00	24.98	8.43	8.43	8.43	32.81	32.81	32.82	77.1	78.1	77.5	5.30	5.37	5.33	4.48	4.38	4.44	3	3.00
	7:01		Middle	3.0	24.90	25.00		8.43	8.43		32.82	32.82		76.9	77.9		5.29	5.36		4.46	4.42		3	
6/11/15	8:31	Fine	Middle	3.5	25.90	25.90	25.90	8.24	8.24	8.29	31.23	31.23	31.69	71.5	70.0	70.9	4.86	4.75	4.81	7.34	7.31	7.42	3	3.00
	8:33		Middle	3.5	25.90	25.90		8.33	8.33		32.15	32.15		70.2	71.8		4.76	4.87		7.55	7.49		3	
9/11/15	10:24	Fine	Middle	3.5	26.70	26.70	26.70	8.31	8.31	8.32	32.59	32.59	32.57	77.5	76.3	75.7	5.07	5.09	5.03	7.09	7.08	7.07	5	5.50
	10:26		Middle	3.5	26.70	26.70		8.32	8.32		32.55	32.55		75.0	73.9		5.01	4.93		7.07	7.05		6	
11/11/15	10:40	Cloudy	Middle	4.0	25.30	25.30	25.30	8.38	8.38	8.38	31.08	31.08	31.09	70.8	72.7	71.7	4.88	5.01	4.94	10.60	10.62	10.62	9	9.00
	10:42		Middle	4.0	25.30	25.30		8.38	8.38		31.09	31.09		71.7	71.7		4.94	4.94		10.62	10.62		9	
13/11/15	11:45	Cloudy	Middle	3.0	25.60	25.60	25.60	8.41	8.41	8.43	32.69	32.69	32.72	89.7	89.5	89.7	6.11	6.08	6.10	5.75	5.65	5.68	6	6.50
	11:47		Middle	3.0	25.60	25.60		8.44	8.44		32.75	32.75		89.9	89.6		6.12	6.08		5.65	5.67		7	
17/11/15	4:46	Cloudy	Middle	3.0	25.30	25.30	25.35	8.35	8.35	8.36	32.32	32.32	32.32	78.6	79.8	79.3	5.37	5.45	5.42	5.84	5.89	5.90	3	3.50
	4:47		Middle	3.0	25.40	25.40		8.36	8.36		32.32	32.32		79.9	78.9		5.46	5.39		5.92	5.96		4	
19/11/15	6:05	Cloudy	Middle	3.0	25.60	25.60	25.60	8.31	8.31	8.32	31.33	31.33	31.33	81.5	82.4	81.9	5.58	5.64	5.61	4.70	4.66	4.65	5	6.00
	6:06		Middle	3.0	25.60	25.60		8.32	8.32		31.33	31.33		82.0	81.8		5.61	5.60		4.62	4.61		7	
21/11/15	20:17	Cloudy	Middle	3.5	25.30	25.30	25.20	8.37	8.37	8.38	32.86	32.86	32.86	81.9	81.0	81.5	5.58	5.55	5.59	8.03	8.01	7.92	4	4.50
	20:18		Middle	3.5	25.10	25.10		8.39	8.39		32.86	32.85		81.2	81.8		5.60	5.61		7.91	7.74		5	
23/11/15	10:10	Fine	Middle	3.5	25.80	25.80	25.80	8.28	8.28	8.30	32.49	32.49	32.49	86.8	89.0	88.7	5.88	6.03	6.01	5.56	5.52	5.50	5	4.50
	10:12		Middle	3.5	25.80	25.80		8.32	8.32		32.49	32.49		89.6	89.5		6.07	6.07		5.49	5.43		4	
25/11/15	10:36	Fine	Middle	3.5	25.30	25.30	25.30	8.33	8.33	8.34	32.57	32.57	32.57	67.3	67.6	67.5	4.60	4.62	4.61	5.93	5.94	5.93	4	4.00
	10:38		Middle	3.5	25.30	25.30		8.35	8.35		32.57	32.57		67.5	67.4		4.62	4.60		5.94	5.91		4	
27/11/15	13:39	Fine	Middle	3.5	23.30	23.30	23.40	8.29	8.28	8.31	32.57	32.57	32.58	84.7	82.9	82.4	5.97	5.85	5.81	4.59	4.44	4.41	3	3.50
	13:41		Middle	3.5	23.50	23.50		8.34	8.34		32.59	32.59		81.9	80.0		5.77	5.64		4.30	4.30		4	
30/11/15	5:47	Fine	Middle	3.0	22.50	22.50	22.50	8.41	8.41	8.42	31.95	31.95	31.96	81.2	81.6	81.1	5.83	5.88	5.83	6.80	6.62	6.64	5	4.50
	5:48		Middle	3.0	22.50	22.50		8.43	8.43		31.96	31.96		80.4	81.0		5.78	5.83		6.68	6.45		4	

Remarks:
Single underline denotes exceedance over Action Level.
Double underline denotes exceedance over Limit Level.

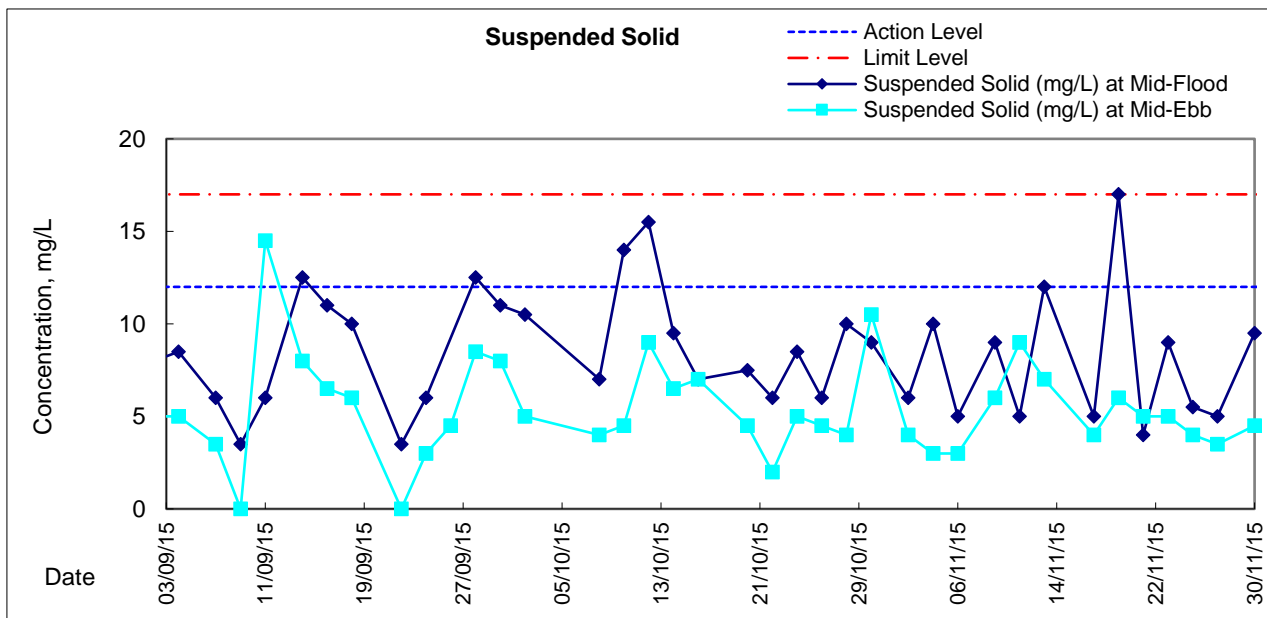
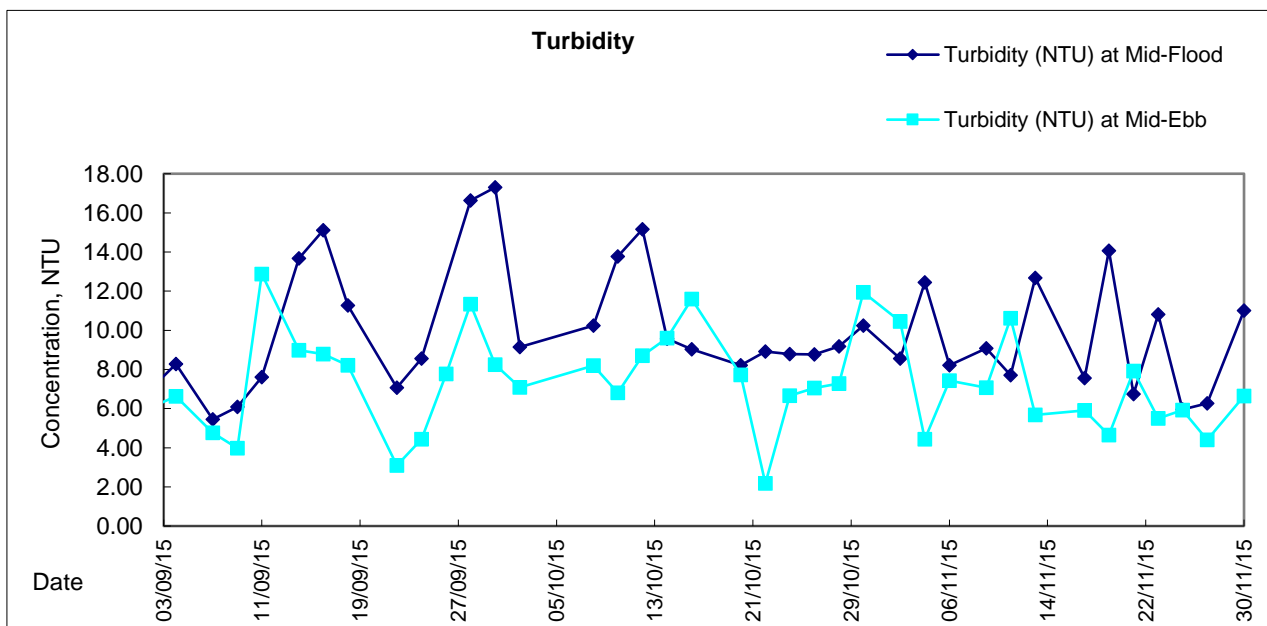
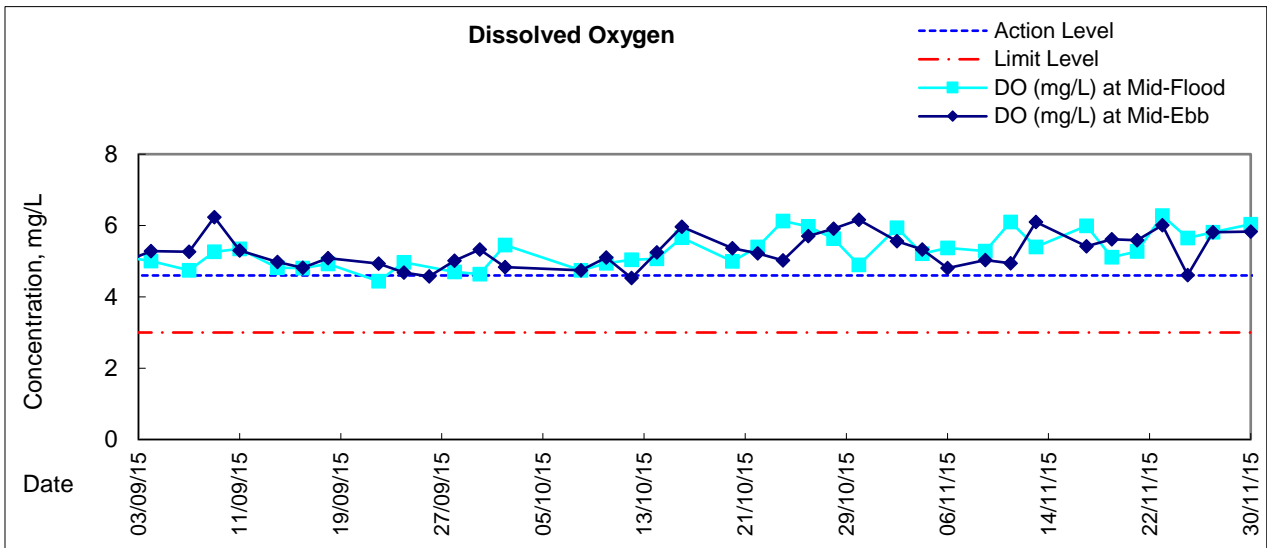


**Water Monitoring Result at Culvert J - Reference Station
Mid-Ebb Tide**

Date	Time	Weather Condition	Sampling Depth		Water Temperature			pH			Salinity		DO Saturation		DO		Turbidity		Suspended Solids					
					°C		-		ppt		%		mg/L		NTU		mg/L							
					Value	Average	Value	Average	Value	Average	Value	Average	Value	Average	Value	Average	Value	Average	Value	Average				
2/11/15	7:01	Cloudy	Middle	3	23.40	23.40	23.35	8.27	8.26	8.23	29.07	29.07	29.07	23.5	24.4	24.6	1.69	1.76	1.78	9.99	9.69	9.62	9	8.50
	7:02		Middle	3	23.30	23.30		8.20	8.20		29.07	29.07		24.9	25.6		1.80	1.85		9.41	9.39		8	
4/11/15	7:10	Cloudy	Middle	3	25.00	25.00	25.00	8.41	8.41	8.39	28.90	28.90	28.90	45.4	47.0	46.1	3.19	3.29	3.24	6.10	6.08	6.06	5	5.00
	7:11		Middle	3	25.00	25.00		8.36	8.36		28.90	28.90		46.4	45.6		3.26	3.21		6.04	6.01		5	
6/11/15	8:27	Fine	Middle	4	25.80	25.80	25.80	8.40	8.40	8.35	28.13	28.13	28.14	45.1	45.5	45.7	3.13	3.16	3.17	12.54	12.54	12.54	7	7.00
	8:29		Middle	4	25.80	25.80		8.30	8.30		28.15	28.15		46.4	45.6		3.22	3.17		12.54	12.52		7	
9/11/15	10:20	Fine	Middle	4	26.90	26.90	26.95	8.25	8.25	8.27	32.46	32.46	32.46	71.1	70.0	69.0	4.78	4.64	4.59	6.29	6.40	6.38	4	4.50
	10:22		Middle	4	27.00	27.00		8.28	8.28		32.45	32.45		68.2	66.5		4.53	4.42		6.42	6.42		5	
11/11/15	10:30	Cloudy	Middle	4	25.00	25.00	25.20	8.38	8.38	8.39	32.91	32.91	32.91	90.1	91.0	90.9	6.03	6.09	6.14	10.62	10.61	10.61	8	8.00
	10:32		Middle	4	25.40	25.40		8.40	8.40		32.91	32.91		91.4	91.2		6.22	6.20		10.60	10.61		8	
13/11/15	11:40	Cloudy	Middle	3	25.70	25.70	25.75	8.46	8.46	8.44	31.50	31.50	31.51	82.2	83.4	82.1	5.61	5.69	5.60	7.51	7.45	7.45	7	7.00
	11:42		Middle	3	25.80	25.80		8.42	8.42		31.51	31.51		81.4	81.5		5.55	5.56		7.43	7.41		7	
17/11/15	4:52	Cloudy	Middle	3	25.50	25.50	25.50	8.36	8.36	8.30	25.23	25.23	25.23	48.5	49.1	48.6	3.44	3.49	3.45	17.40	17.58	17.58	12	12.50
	4:53		Middle	3	25.50	25.50		8.24	8.24		25.23	25.23		48.7	48.1		3.46	3.42		17.63	17.70		13	
19/11/15	6:12	Cloudy	Middle	3	25.80	25.80	25.80	8.33	8.33	8.25	26.71	26.71	26.71	57.0	57.5	57.4	3.99	4.04	4.03	8.37	7.91	8.08	8	8.50
	6:13		Middle	3	25.80	25.80		8.16	8.16		26.70	26.70		57.7	57.5		4.04	4.03		8.03	8.01		9	
21/11/15	20:25	Cloudy	Middle	3	25.20	25.20	25.15	8.39	8.39	8.37	31.40	31.41	31.40	75.5	76.4	75.7	5.22	5.28	5.24	7.63	7.51	7.33	5	4.50
	20:26		Middle	3	25.10	25.10		8.34	8.34		31.40	31.40		75.5	75.5		5.21	5.23		7.12	7.07		4	
23/11/15	10:05	Fine	Middle	3	25.80	25.80	25.80	8.24	8.24	8.23	30.14	30.14	30.15	70.9	72.5	72.0	4.87	4.98	4.95	8.71	8.60	8.62	6	5.00
	10:07		Middle	3	25.80	25.80		8.22	8.22		30.15	30.15		72.3	72.4		4.97	4.97		8.58	8.57		4	
25/11/15	10:32	Fine	Middle	4	25.30	25.30	25.30	8.29	8.29	8.29	30.71	30.71	30.72	68.6	70.3	70.7	4.73	4.85	4.88	8.84	8.84	8.83	7	7.00
	10:34		Middle	4	25.30	25.30		8.29	8.29		30.72	30.72		72.5	71.4		5.00	4.93		8.83	8.81		7	
27/11/15	13:33	Fine	Middle	4	23.20	23.20	23.15	8.33	8.33	8.32	29.46	29.46	29.49	67.8	67.2	66.9	4.89	4.85	4.83	11.03	11.14	11.14	5	5.00
	13:37		Middle	4	23.10	23.10		8.31	8.31		29.51	29.51		66.5	65.9		4.80	4.76		11.15	11.24		5	
30/11/15	5:55	Fine	Middle	3	23.10	23.10	23.05	8.38	8.38	8.36	27.72	27.73	27.72	60.4	60.2	59.6	4.42	4.40	4.36	9.58	9.56	9.76	9	9.50
	5:56		Middle	3	23.00	23.00		8.33	8.33		27.72	27.72		58.9	59.0		4.31	4.32		9.98	9.91		10	



Graphic Presentation of Water Quality Result of M5B - Central Cooling Water Intake Groups





Graphic Presentation of Water Quality Result of Culvert J - Reference Station

